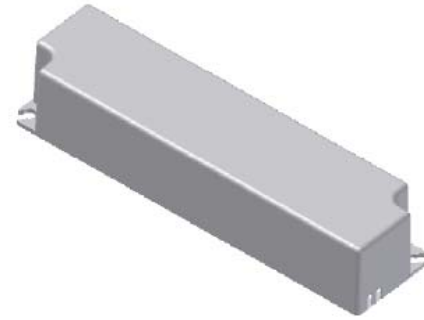


LS6133 0-10V to PWM Dimming Signal Converter

Specifications

| | |
|--------------------------------|--------------------------------|
| Input | 24V DC |
| Output (24V) | 4.0A (max), PWM 300Hz |
| Efficiency | 80% typ. |
| UL Classification | Class 2, UL1310 |
| IP Rating | IP66 (Dry/Damp Location) |
| Ambient Operating Temp. | -40°F to 140°F (-40°C to 60°C) |
| Dimming Signal Input | 0-10V DC |



Fixture Compatibility

In order to determine the maximum number of fixtures this device will operate, please refer to the compatibility tables. These tables can be found in the back of the LED catalog and online.

Indicative Dimensions

| | In. (mm) |
|-----------------|-------------|
| Case length | 5.2 (132) |
| Case width | 1.3 (34) |
| Case Height | 1.0 (25) |
| Mounting length | 4.8 (122.4) |
| Mounting width | 1.0 (24.8) |
| Overall length | 5.2 (132) |

Transformer Wiring Diagram

The following diagram shows the overall circuit design. Refer specific wiring diagram for LS6133 for details.

