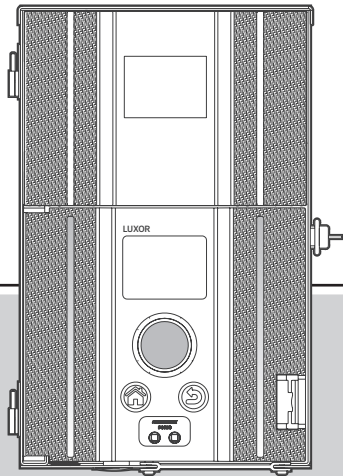


Lutron® Homeworks® QS Integration Guide

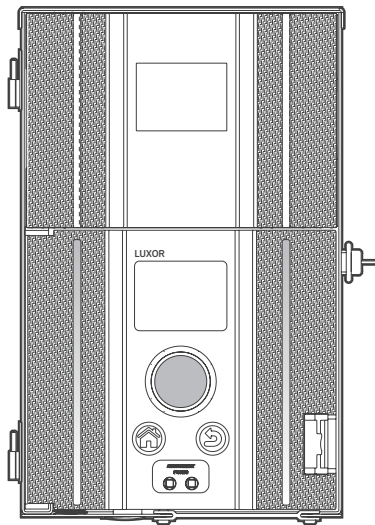
Luxor® Controllers with ZD Technology® and ZDC Technology®



Lighting Accessories by Hunter Industries

Table of Contents

- 3 System Requirements
- 4 Getting Started
- 5 Adding Devices
- 8 Link Assignments
- 9 Edit Integration IDs
- 10 Telnet Logins
- 11 Program Keypads
- 12 Transfer Project
- 13 Luxor Controller Configuration
- 14 Enable Lutron
- 15 Troubleshooting



System Requirements

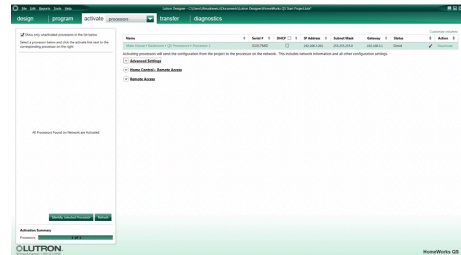
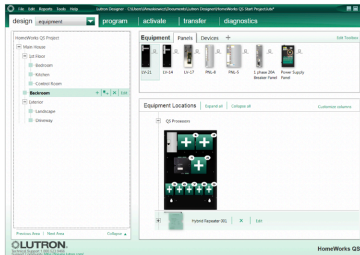
Lutron Homeworks QS Requirements

Software: Homeworks QS

Getting Started

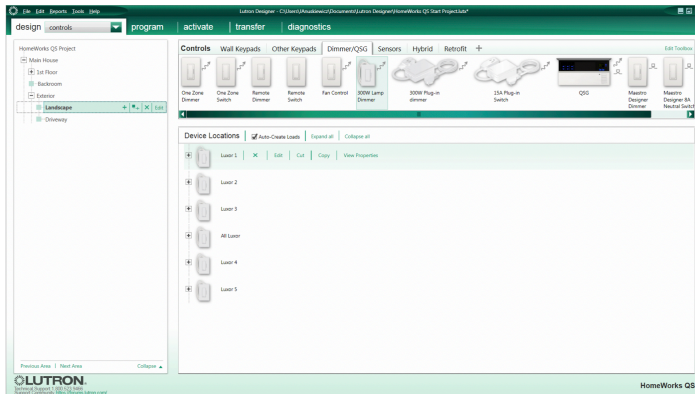
Creating a Project

1. Name the project.
2. Click on the Activate tab.
3. Select "processors" in drop-down box.
4. Uncheck the "4HHuunntteerr" box.
5. Record the processor IP address.



Getting Started

6. In the Design tab, select Controls from the drop-down box.
7. Press "+" next to Exterior to add the location.

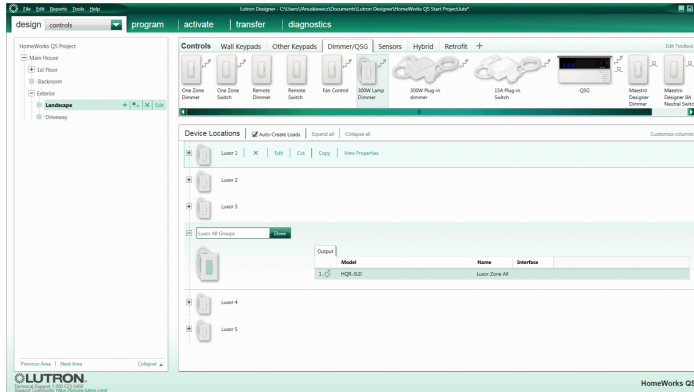


Note: The location name should correspond to the Luxor location (e.g., front yard, backyard, etc.).

Adding Devices

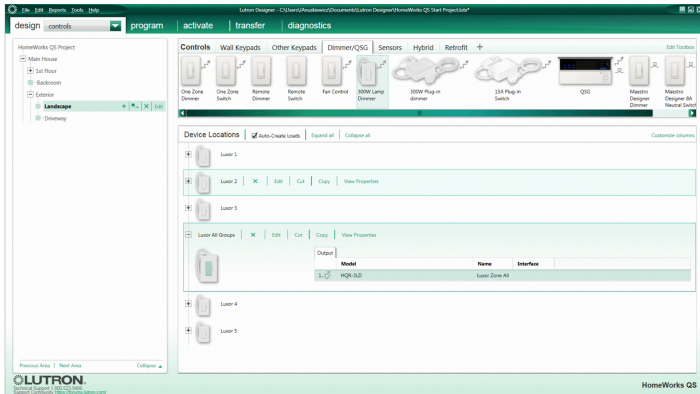
Adding Devices

1. In the Controls section, select the Dimmer/QSG tab.
2. Click "+" to add the HQR-3LD 300W Lamp Dimmer.



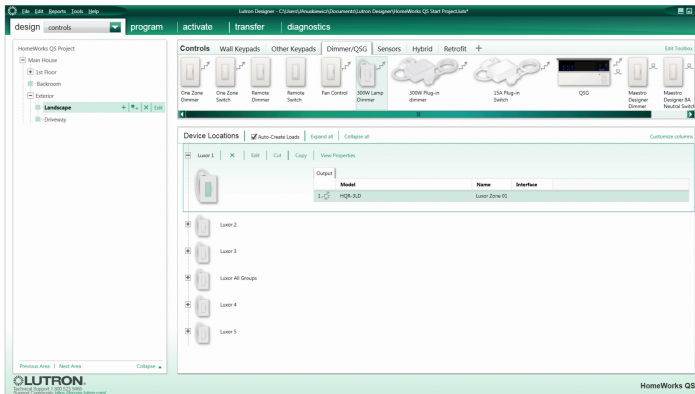
Adding Devices

3. Enter "Luxor All Groups" in the Device Location field.
4. Enter "Luxor Zone All" in the Name field.
5. Click "Done."



Adding Devices

6. For the device named Luxor All Groups, click "+."
 7. Add HQR-3LD 300W Dimmer to the Luxor All Groups device.
 8. Enter "Luxor1" in the Device Location field.
 9. Enter "Luxor Zone 01" in the Name field.
 10. Click "Done."
- Repeat steps 6-10 until a device has been added for all available Luxor Groups.



Link Assignments

Link Assignments

1. Confirm all Luxor groups have been added as a device.
2. In the Design tab, select "link assignment" from the drop-down box.
3. Assign the link to Luxor Group devices.

The screenshot shows the Lutron Designer software interface. The top menu bar includes "File", "Edit", "Reports", "Tools", and "Help". The main window title is "Lutron Designer - C:\Users\Prockewicz\Documents\Lutron Designer\HomeWorks Q3 Start Project\Lutron Designer". The interface is divided into several sections:

- Navigation:** "design" (selected), "link assignment", "program", "activate", "transfer", "diagnostics".
- Project Tree (Left):** "HomeWorks Q3 Project" > "Main House" > "Bedrooms" > "Q3 Processors" > "Processor 1" > "Link 1 (HWQS RF)".
- Configuration (Top Right):** "Link 1 (HWQS RF)" > "change link type".
Subnet Address: 1910 RF Channel Number (Frequency in MHz): 955A (433.0) [Expand all] [Collapse all] Show Assigned Items
- Assignable Items (Bottom):** Show: HWQS RF Devices Type: All
- Table of Assignable Items:**

Item Description	Serial #	Type
Main House > Exterior > Landscape > LanzaThemeZ		Tabletop Dimmer
Main House > Exterior > Landscape > LanzaThemeA		Tabletop Dimmer
Main House > Exterior > Landscape > Lanza All Groups		Tabletop Dimmer
Main House > Exterior > Landscape > Lanza 5		Tabletop Dimmer
Main House > Exterior > Landscape > Lanza 4		Tabletop Dimmer
Main House > Exterior > Landscape > Lanza 3		Tabletop Dimmer
Main House > Exterior > Landscape > Lanza 2		Tabletop Dimmer
Main House > Exterior > Landscape > Lanza 1		Tabletop Dimmer
Main House > Bedroom > Hybrid Repeater 005	01302709	Hybrid Repeater
Main House > 1st Floor > Bedroom > Bedroom Light 1	01356349	Tabletop Dimmer
Main House > 1st Floor > Bedroom > Bedroom Keypad 1	01398010	Tabletop Keypad

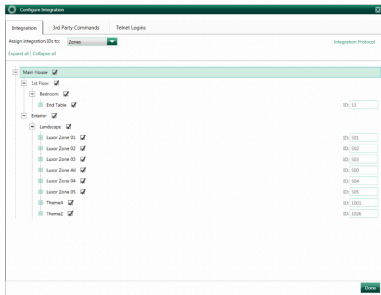
At the bottom left, there is a "LUTRON" logo and contact information: "General Support: 1-800-521-3489", "Design Community: http://www.lutron.com". At the bottom right, it says "HomeWorks Q3".

Edit Integration IDs

Edit Integration IDs

1. In menu bar, select "Tools" and click "Configure Integration."
2. Select "Zones" in the "Assign integration IDs to:" drop-down box.
3. Double-click the ID field for the "Luxor Zone All" group and enter 500.
4. Double-click the ID field for the "Luxor Zone 01" group and enter 501.
5. Edit ID numbers for the remaining Luxor Groups.
6. Click "Done."

Note: Groups starting ID is 500. Themes starting ID is 1001.

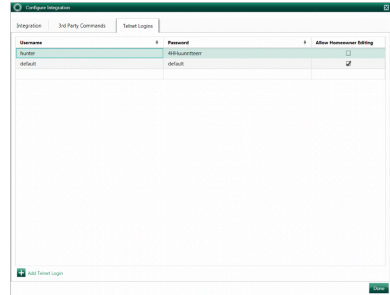


Telnet Logins

Telnet Logins

1. From the menu bar, select "Tools" and click "Configure Integration."
2. In the Configuration Integration menu, select Telnet Logins.
3. At the bottom of the screen, click "+ Add Telnet Login."
4. Enter "hunter" in the Username field.
5. Enter "4HHuunntteerr" in the Password field.
6. Uncheck the "Allow Homeowner Editing" box.

Note: The "Bad Login" error message will be displayed if the Username and Password are not named "hunter" and "4HHuunntteerr."



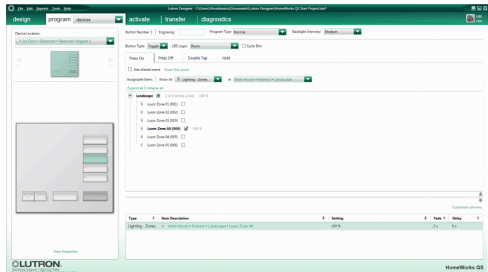
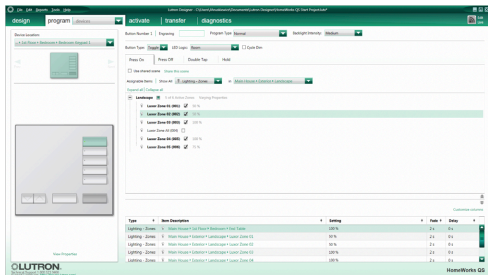
Program Keypads

Program Keypads

1. From the Program tab, select Keypad to control Luxor Groups.
2. Select the Device Location.
3. Select the Keypad button.
4. Select "Luxor Groups" to be controlled by the Keypad button.
5. Set a dimmer level.

Repeat steps 3-5, until all Luxor Groups have been assigned to the Keypad.

Note: Default levels remain unchanged for Fade and Delay.



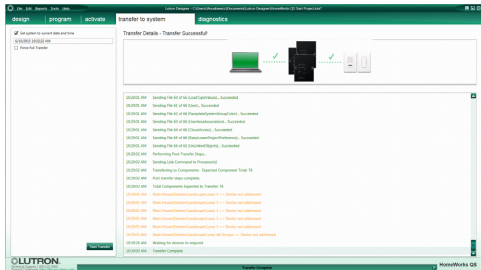
Transfer Project

Transfer Project

1. In the Transfer tab, click the "Start Transfer" button.
2. Wait until the transfer is complete.
3. Next, configure the Luxor controller (refer to pages 13–14).

Note: Ignore all "Device not addressed" warnings. Luxor Group devices do not need to be activated since they are used as placeholders.

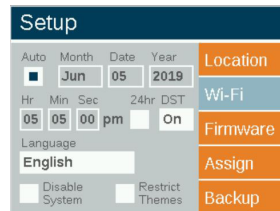
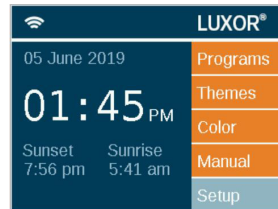
If additional Luxor Groups and devices are added in the future, the project must be re-transferred.



Luxor Controller Configuration

Luxor Controller Configuration

1. From the Luxor home screen, select "Setup."
2. Select Wi-Fi (or LAN for hardwire connection).



Luxor Controller Configuration

3. Verify the router connection.
4. Select "Lutron."
5. Enter the Lutron IP address.

Note: The IP address can be found on the Main Repeater (refer to page 4).

6. Enter 500 in the "Integration ID Start #" field.

Enable Lutron

7. Select the "Lutron Enabled" box.
8. Confirm "Connected to Lutron."

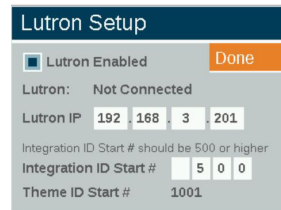
Note: The Luxor controller will attempt to connect if the Lutron system is running.



The "Wi-Fi Setup" screen features a dark blue header. Below it, there are three orange buttons: "Static IP", "Lutron", and "Test". The "Lutron" button is selected. The network name is "lxtwo". The IP Address is 10.68.36.34 with a "Static" checkbox. The MAC Address is 28:16:a8:66:b7:ff and the Serial # is 0000000000.



The "Lutron Setup" screen has a dark blue header. The "Lutron Enabled" checkbox is unchecked. The "Lutron" status is "Not Connected". The Lutron IP is 0.0.0.0. The Integration ID Start # is 500. The Theme ID Start # is 1001. A note states "Integration ID Start # should be 500 or higher".



The "Lutron Setup" screen has a dark blue header. The "Lutron Enabled" checkbox is checked. The "Lutron" status is "Not Connected". The Lutron IP is 192.168.3.201. The Integration ID Start # is 500. The Theme ID Start # is 1001. A note states "Integration ID Start # should be 500 or higher".

Troubleshooting

Connection Error

If the Luxor controller fails to connect, verify the Lutron IP address is correct.

"Bad Login" Message

The "Bad Login" error message occurs when the Lutron login username and password do not match "hunter" and "4HHuunntteerr" (refer to page 10).

If changes are made, the project will need to be transferred again (refer to page 12).

Lutron and Homeworks are trademarks of Lutron Electronics Co. Inc., registered in the U.S. and other countries.

© 2019 Hunter Industries Inc. Hunter, all related logos, and all other trademarks are property of Hunter Industries, registered in the U.S. and other countries.

HUNTER INDUSTRIES

1940 Diamond Street, San Marcos, California 92078 USA
corporate.hunterindustries.com

LP-002-IG-HQS RevB US 6/19