

IMPORTANT INSTRUCTIONS

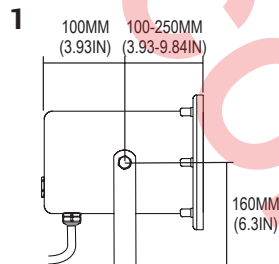
For Installation LS345

A
START
HERE

SUBMERSIBLE LUMINAIRE WET/DRY

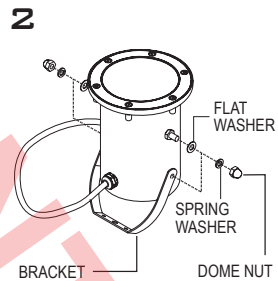


WARNING If cable damaged replace with cable supplied by LUMASCAPE only. DO NOT SHORTEN, INTERFERE OR DISCONNECT CABLE FROM FITTING. WARRANTY WILL BE VOID IF CABLE ASSEMBLY IS TAMPERED WITH.



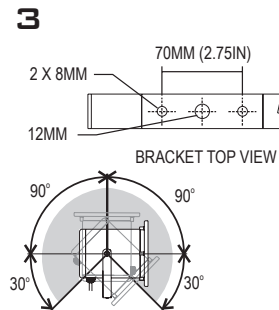
1 Locate Fixtures

Site fixture in proximity to cabling. Use discretion in locating fixtures as glass can become very hot and may burn.



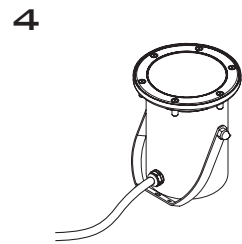
2 Mount Bracket to Fixture

Mount bracket supplied to fixture using the M10 dome nuts and washers as shown above.



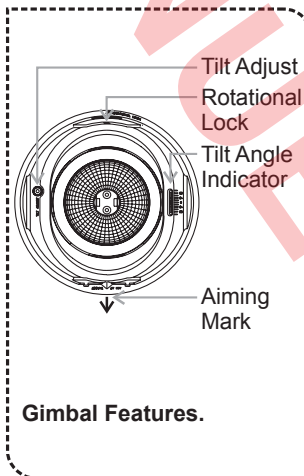
3 Mount Fixture

Mount fixture to secure surface. Orientate fixture as required and tighten nuts on bracket.

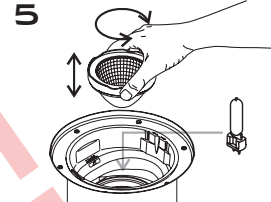


4 Connect to Branch Circuit

Connect fixture to branch circuit according to local wiring rules.

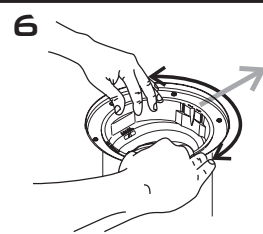


Gimbal Features.



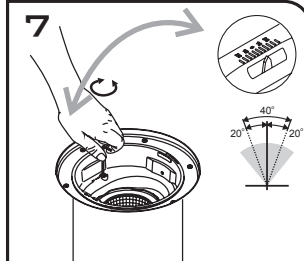
5 Insert lamp into fixture.

Unscrew reflector and remove. Insert lamp into lampholder and test. Replace reflector.



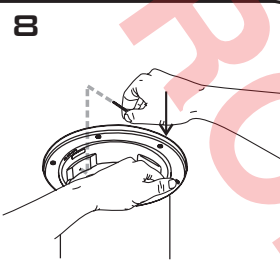
6 Target Gimbal 1.

Rotate gimbal until the **Aiming Mark** is targeted as desired.



7 Target Gimbal 2.

Adjust gimbal tilt angle by rotating **Tilt Adjust** screw with Allen key supplied. Approximate angle can be read from the **Tilt Angle Indicator**.



8 Lock Gimbal.

Whilst exerting downward pressure on gimbal, tighten Rotational Lock grub screw.

RELAMPING

BRACKETS INDICATE
INSTALLATION STEPS
ABOVE



LUMASCAPE
USA INC.

LUMASCAPE USA INC.

US Head Office
1300 Industrial Rd., Unit #19
San Carlos, CA 94070
USA

Telephone
1-(650)-595-LUMA(5862)

Fax
1-(650)-595-5820

www.lumascope.com

Free Call
1-866-695-LUMA(5862)
(US & Canada)



IMPORTANT INSTRUCTIONS

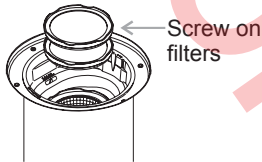
For Installation LS345

B

SUBMERSIBLE LUMINAIRE WET/DRY

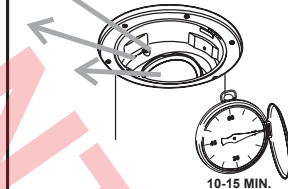


9



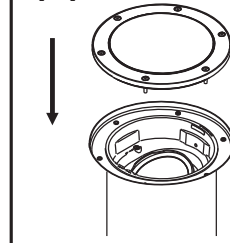
Accessories.
Add accessories. Note instructions supplied with accessory. Further gimbal adjustments may be required with accessories in place.

10



Run Fixture.
Allow to burn for 10-15 minutes without lid attached to allow any moisture in fixture to evaporate.

11



Seal Fixture.
Ensure seal and sealing surface is clean. Clean glass if necessary. Tighten lid screws using the 3mm Allen key supplied. DO NOT OVERTIGHTEN.



LUMASCAPE
USA INC.

LUMASCAPE USA INC.

US Head Office
1300 Industrial Rd., Unit #19
San Carlos, CA 94070
USA

Telephone
1-(650)-595-LUMA(5862)

Fax
1-(650)-595-5820

www.lumascope.com

Free Call
1-866-695-LUMA(5862)
(US & Canada)